

TCM

Large-size Forklift Trucks

25-30 ton

SPECIFICATIONS

FD250-3 FD300-3

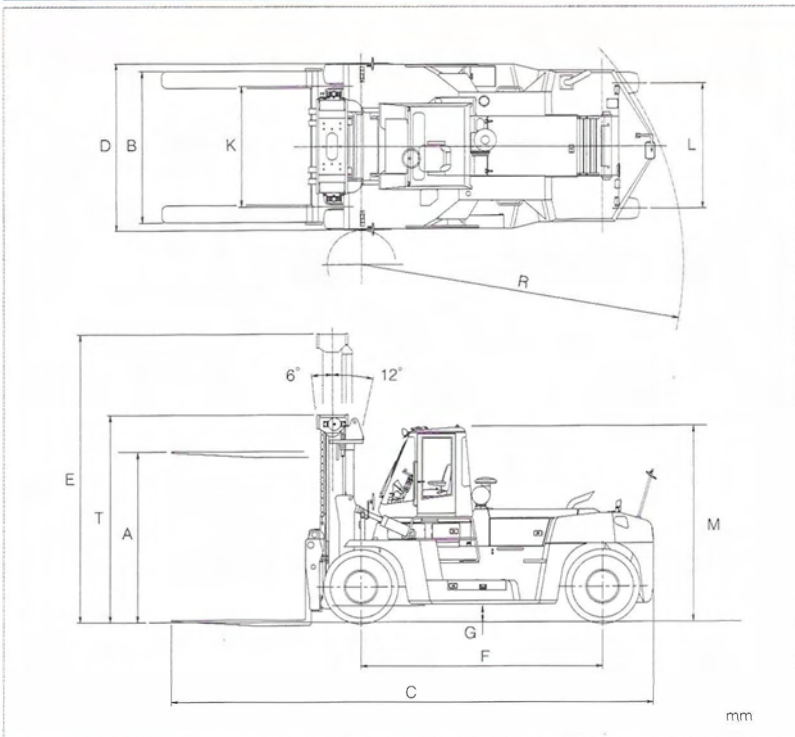


STANDARD SPECIFICATIONS

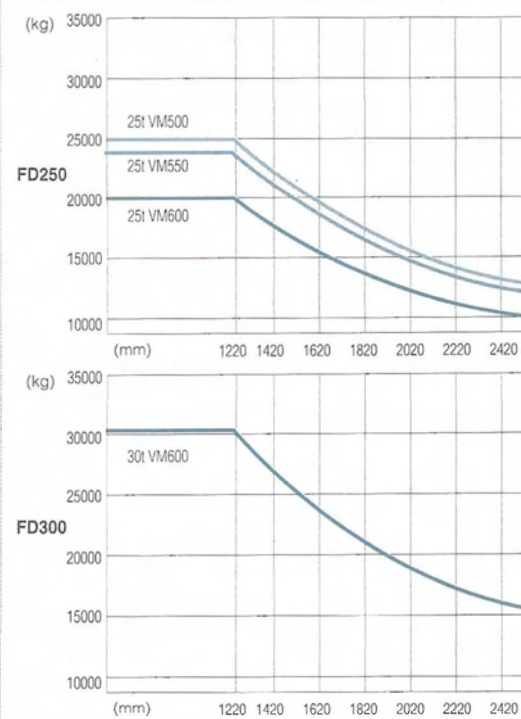
Characteristics	1	Manufacturer			TCM	TCM		
	2	Model			FD250-3	FD300-3		
	3	Load Capacity	kg		25000	30500		
	4	Load Center	mm		1220	1220		
	5	Power Type			Diesel	Diesel		
	6	Operator Position			Seated	Seated		
	7	Tire Type	Front/Rear		Pneumatic	Pneumatic		
	8	Wheels(x=driven)	Front/Rear		2x / 2	2x / 2		
Dimensions	9	Maximum Fork Height	mm	A	3000	3000		
	10	Free Lift	mm		0	0		
	12	Overall length : with forks	mm	C	8750	9135		
	13	Fork Size	L x W x T	mm	2440 x 310 x 105	2440 x 330 x 108		
		Fork Spread(Outside)	Max. / Min.	mm	2750 / 950	2750 / 1250		
	14	Tilt Angle	Fwd. / Bwd.	deg	6 / 12	6 / 12		
	15	Length to Fork Face	mm		6310	6695		
	16	Overall Width	mm	D	3070	3460		
	17	Mast Lowered Height	mm	T	3750	3750		
	18	Mast Extended Height	mm	E	5250	5250		
	19	Cabin Height	mm	M	3600	3650		
		Overhead Guard Height	mm		-	-		
	20	Operator's Seat Height	mm		2400	2460		
	21	Turning Radius(Outside)	mm	R	5900	6310		
	22	Load Distance (Centerline of front axle to front face of forks)	mm		985	1070		
	Rear Overhang	mm		925	1025			
23	Intersectina Aisle	mm		5000	5330			
Performance	24	Speeds	1st	km/h	7.5	7.0	5.8	5.3
			2nd	km/h	13.0	12.0	10.1	9.2
			3rd	km/h	21.0	19.5	16.1	14.9
			4th	km/h	34.0	32.0	26.1	24.4
	25	Lifting	Full Load	mm/sec	330		250	
			No Load	mm/sec	360		280	
	26	Lowering	Full load	mm/sec	400 - 600		400 - 600	
			No Load	mm/sec	400 - 600		400 - 600	
	28	Max. Drawbar Pull	Full Load	kN	163		197	
			No Load	kN	118		148	
30	Max. Gradeability*	Full Load	%	22		20		
		No Load	%	27		26		
Weight	32	Total Weight	kg		34150	43440		
	33	Weight Distribution	Full Load	Front	kg	53400	67480	
			Rear	kg	4710	6460		
	34	No Load	Front	kg	17250	21620		
Rear			kg	16900	21820			
Chassis & Wheels	35	Tires	Number	Front / Rear		4 / 2	4 / 2	
	Size		Front		14.00 - 24 - 24PR(ID)	16.00 - 25 - 32PR(ID)		
			Rear		14.00 - 24 - 24PR(ID)	16.00 - 25 - 32PR(ID)		
	38	Wheelbase	mm	F	4400	4600		
	39	Tread	Front	mm	K	2200	2440	
			Rear	mm	L	2300	2530	
		Overhead Clearance	mm		1115	1115		
		Hood Height	mm		2060	2135		
		Drawbar Height	mm		785	850		
		Step Height / Floor Height	mm		-	-		
40	Underclearance	Min. without Load	mm		300	300		
41		Center of Wheelbase	mm	G	330	385		
42	Brake	Service(Foot)			Built in axle - multiple wet disc	Built in axle - multiple wet disc		
		Parking			Built in mission - wet disc	Built in mission - wet disc		
Engine & Transmission	45	Battery	Voltage / Capacity(5HR)	V / AH	2 x 12 / 108	2 x 12 / 108		
	49	Internal Combusion Engine	Make / Model		MITSUBISHI FUSO 6D24T with turbo-charger / inter-cooler	MITSUBISHI FUSO 6D24T with turbo-charger / inter-cooler		
	50		Rated Horsepower / r.p.m.	kW	165 / 2100	165 / 2100		
	51		Maximum Torque / r.p.m.	N-m	980 / 1400	980 / 1400		
			Number of Cylinder		6	6		
	52		Piston Displacement	cc	11940	11940		
			Alternator output	Amp	50	50		
		Fuel Tank Capacity	Liter	600	600			
55	Transmission	Type		Power - shift	Power - shift			
57	Operating Pressure	Stage	Fwd. / Rvs.		4 - 4	4 - 4		
		For Attachments		MPa(psi)	20.6	20.6		

Note : *Computed values

Dimensions



Load charts



Mast Model	Capacity		Max. Fork Height	Overall Mast Height (lowered)		Overall Mast Height (raised)		Tilt Angle	Service Weight		
	Load center 1220mm			FD250-3	FD300-3	FD250-3	FD300-3		Fwd / Bwd	FD250-3	FD300-3
	kg	kg									
VM300	25000	30500	3000	3750	3750	5250	5250	6 / 12	34150	43440	
VM350	25000	30500	3500	4000	4000	5750	5750	6 / 12	34350	43690	
VM400	25000	30500	4000	4250	4250	6250	6250	6 / 12	34560	43940	
VM450	25000	30500	4500	4500	4500	6750	6750	6 / 12	35050	44600	
VM500	25000	30500	5000	4750	4750	7250	7250	6 / 12	35250	44860	
VM550	24000	30500	5500	5000	5000	7750	7750	6 / 12	35460	45110	
VM600	20000	30500	6000	5250	5250	8250	8250	6 / 12	35650	45360	

Standard Equipment and Accessories

Equipment

- Automatic 4-speed powershift transmission
- Bonnet gas dumper with locking stay
- Brake cooling oil level view gauge
- Cartridge type filters; engine fuel, engine oil, mission oil & hydraulic oil
- Coolant reservoir tank
- Cyclopack type double element air cleaner
- Delux suspension seat
- Drawbar device in counter weight
- Electrically-controlled parking brake
- Engine oil dipstick
- Fork positioner(manual type)
- Front dual drive wheels
- Full hydrostatic power steering
- Heavy duty pneumatic tires
- Hydraulic oil level view gauge
- Large capacity fuel tank(600 liters)
- Load check valve
- Steel cabin with air-conditioner
- Tilt adjustable steering column
- Tilt cylinder lock valve
- Transmission oil dipstick
- Wet disc brake
- Wide view 2-stage mast
- 2440mm length forks

Accessories

- Buck-up buzzer
- Deluxe floor mat
- Electric horn
- Front combination lights turn signal & clearance
- Head lights
- Operator tool kit
- Rear combination lights, turn signal, tail, stop, back-up
- Rear reflectors
- Rear under-view mirror
- Room mirror
- Side view mirrors
- Turn signal lights(front)
- Working lights(front, rear)

Switch & Controls

- Automatic transmission mode select switch power mode & economy mode
- Electrically-controlled direction change lever inc. neutral safety lock device
- Electrically-controlled parking brake switch
- Lift lever
- Lighting switch
- Speed change hold switch (1st fixed / 2nd fixed / automatic speed shift)
- Starter switch inc. pre-heating & main switch
- Tilt lever
- Turn signal switch

Instruments

- Air cleaner clogging warning indicator
- Brake oil pressure warning indicator
- Brake oil temperature warning light
- Charge indicator
- Engine diagnosis monitor lamps
- Engine oil pressure warning indicator inc. engine oil filter clogging warning
- Engine pre-therming lamp
- Engine thermometer
- Fuel meter
- Hi-beam indicator(head lights)
- Hourmeter
- Parking brake indicator
- Speedometer
- Transmission oil temperature warning indicator
- Turn signal indicator
- Working light indicator

Optional Equipment and Accessories

Equipment

- Alternative fork length
- Alternative mast height
- Central greasing system
- Delux suspension seat with seat belt
- Detachable Ram / Fork attachment
- Fork positioner(hydraulic cylinder type)
- Fork positioner(hydraulic motor type)
- Fork positioner(hyd. cylinder) with side shifter
- Fork positioner(hyd. motor) with side shifter

- Heater & defroster
- Large capacity alternator
- Large capacity battery
- Load weight indicator
- Overhead guard type cab. with wide rubber floor mat
- Ram attachment
- Side shifter
- Split ram attachment

Accessories

- Custom paint-works
- Fire extinguisher
- Rotating warning yellow light(beacon)

Others on request



- TCM retains the right to change these products and specifications without incurring any obligation relating to such changes.
- These products and specifications are subject to change without notice.
- Photos and illustrations may or may not include optional equipment and accessories.
- Features and specifications may vary depending on markets.

Manufactured by

TCM

TCM CORPORATION

1-15-5 Nishi-Shimbashi, Minato-ku,
Tokyo 105-0003 Japan

TEL: +81 3 3591 8176

FAX: +81 3 3591 8152

www.tcmglobal.net

Distributed by